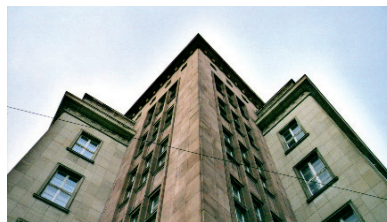
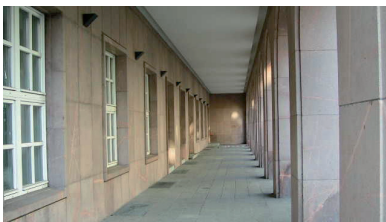


Refurbishment

## Office and Commercial Building Chausseestraße Berlin, Germany



### Scope / Service

Restoration of a listed office building, former Chamber of Industry and Commerce of the GDR.

Development of an integrated concept.

Project management and consulting within the realisation for Car & Partner Architekten, Gräfelfing, Germany.

Licence planning, detailed design, specification, BoQ, cost estimate, site supervision, documentation

Planning 2000 - 2001

### Background

Built 1954-1957 by Johannes Pässler.

### Client

ARGUS Immobilien-Projektentwicklung GmbH, Cologne, Germany

### Total Area

GFA 9.000m<sup>2</sup>